



NWMMOC NEWSLETTER

February 2025

North Wilts Branch Rally

Words: Martin Howard. Photo: Pam Holmes

This year's **North Wilts Branch Rally** is on Sunday 4th May. Again it will be held at the Lechlade Annual Vintage Rally & Country Show near the beautiful village of Clanfield, on the Oxfordshire, Gloucestershire border.

The Vintage Rally & Country Show will include:

Classic Cars, Motor Cycles and Commercial Vehicles, Miniature Steam, Tractors, Model Tent, Classic Caravans, Model Boats and Craft. A Fun Fair, Boot Sales, Trade Stands and Refreshments. Also featuring, Britannia Majorettes, and the Highworth Silver Band.

Check our website for further details. Watch out for application forms which will soon be available.....make sure you put in your application for the rally as soon as possible!



Greetings from Gandia in Spain.

Words & Photo: Bill Reed & Nicolas Reed.

Young Member Nicolas Reed sends greetings from Gandía in Spain. He says,

"I found this SEAT 600 on a walk near the railway station. It has an old-style Valencia number plate and was built in about 1970."

The Sociedad Española de Automóviles de Turismo produced these cars in Barcelona from 1957 to 1973, under licence from FIAT.

For many Spaniards the SEAT 600 was their first car, so it occupies a similar place in popular culture to the Morris Minor in Britain.



An interesting handbrake problem!

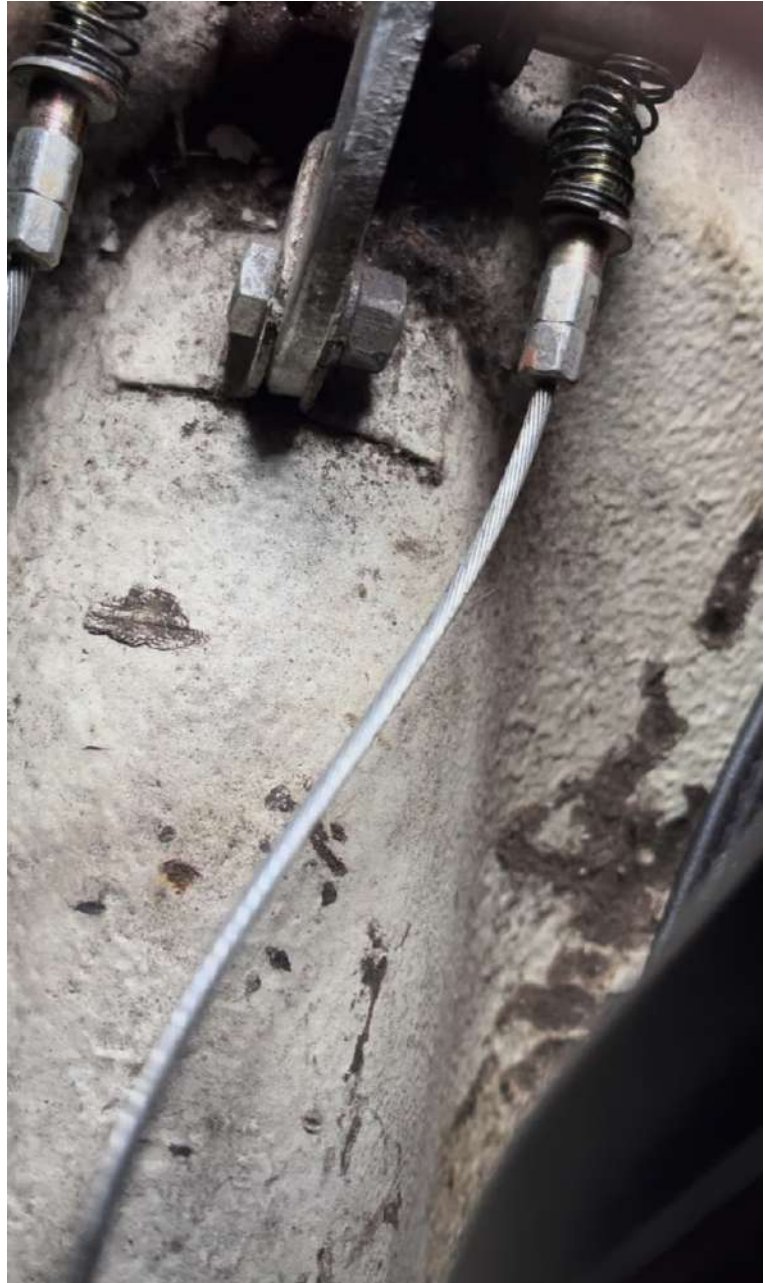
Words & photo: Bill Reed.

I found that my handbrake is only working on one side. The passenger side locks up but the driver's side doesn't.

I thought it would be just a matter of adjustment but the amount of play in the driver's side cable indicates otherwise.

The photograph shows play remaining in the driver's side cable when the passenger side is locked up and taut.

I will be undertaking further investigation!



**Exclusive Opportunity for Our Branch:
Monday 17 March, 2:00pm, Athelstan Museum Malmesbury
(in the Town Hall). Arranged by Bill.**



Words and photo: Bill Reed.

2:00: Exclusive tour of Athelstan Museum, where you can see exhibits including:

JMW Turner's watercolour of Malmesbury Abbey.

The history of the Malmesbury Branch railway.

Wedding dress display.

King Athelstan's sword: the replica made by blacksmith Hector Cole OBE, with video.

Roman coin hoard found at Garsdon.

"Malmesbury Voices" spoken memory collection.

"Bird's Eye View" of Malmesbury during the Civil War.

3:00: Meet at the Rausing Building (old Moravian Church) which is just round the corner from the Town Hall, for the following:

Display of N-gauge model of Malmesbury railway station, built by Rev. Chris Burch (1950-2016) and the story of the construction of this model, written by Chris Burch.

Slideshow of images of the model, and of other Malmesbury Branch models

Listening corner with spoken memories of the Malmesbury Branch

Illustrated talk by Bill on the locomotive "Malmesbury Abbey" built in Swindon, and its designer George Jackson Churchward.

Tea and biscuits.

The Museum is volunteer-run and entry is free. Donations are welcome.

Website: <https://www.athelstanmuseum.org.uk/>

Please inform Gill if you would like to attend.

Weekend of 8-9 June, Wirksworth, Derbyshire: arranged by Alex and Bill

Words & photos: Bill Reed.

Visit to the Morris Minor Day at the Great British Car Journey, which is nearby at Ambergate. Website: <https://greatbritishcarjourney.com/>



William Morris looks down over a display at the Great British Car Journey

Meet up with our honorary members Julian and Susie Marshall, who live in Wirksworth.

There are many interesting sites to visit locally, including:

- Wirksworth Heritage Centre
- Ecclesbourne Valley Heritage Railway
- The Star Disc stone circle
- Crich Tramway Village (photo below with Branch Morris Minors)
- Derwent Valley Mills World Heritage Site

So you could plan to spend a few days here.
Please make your own accommodation arrangements.
Website: <https://www.storyofwirksworth.co.uk/>

Please inform Gill if you would like to take part in this trip.



Some day we will return in a Morris Minor!

Words & Photo: Juliet Evans.

I thought I would send this, a little different from most Morris pictures!

After several years off the road and searching for someone to do the work, by luck I have found someone.

When I moved to Brinkworth a year ago, I decided to do a Google search and found Braydon Elite only a mile up the road, which will be great to see the progression of work . I had to wait a while for a space. The first date we abandon as the weather was horrendous . The second date to take her over didn't prove much better with snow and ice!

She is awaiting the first stage of welding underneath which will follow rust protection. Lloyd from Braydon Elite will do an album of her work so I will be able to share her progress.



North Wilts Branch Events, MMOC Area 4 Events and other events.

Please refer to the North Wilts Branch website.

<http://www.northwiltsmmoc.co.uk/styled-18/index.html>

Preview for the March Event

For members interested in our Branch event about the Malmesbury railway, on 17 March, Bill Reed's podcast on the Malmesbury Branch Railway is now available on the website of Malmesbury Community Radio, by following one of these links.

The first link should take you directly to it:

<https://www.mixcloud.com/FlyingMonkCommunityProjects/bill-reed-chats-to-us-about-the-malmesbury-branch-railway/>

The second link takes you to it along with the other New Year podcasts, you need to scroll down to "Malmesbury Branch Railway".

<https://flyingmonkcommunityprojects.weebly.com/index.html>

Thanks & final notes

From: Pam Holmes

I would like to thank those people who have taken the time to contribute to this Branch Newsletter by sending me short reports and/or photos:

Ashley Alexander

Juliet Evans

Martin Howard

Bill Reed

Nicolas Reed

I look forward to meeting up at our Branch events in February.